

# The history of Nori farming in Tokyo Bay

東京湾での海苔養殖の歴史

&

trial to pass it down

それを継承する試み

Fumihiko Koyama  
Omori Nori Museum

# What's Nori ?



- Nori is one of the most popular traditional foods in JPN.
- It's used for Sushi roll , Onigiri and so on.
- It's a kind of seaweeds.
- Ariake Sea's Nori production accounts for half of JPN.



# History – Tokyo Bay

*Tokyo(Edo) Bay*



*By Hiroshige Utagawa 1<sup>st</sup>, 1857*

- Active around 300 years ago (especially Omori area)
- Suitable locations
  1. Shallow beach (wetland)
  2. Brackish water (rivers)
  3. Gentle waves
- Spread all over the country from Omori



# Old pictures (1940~50's)



Pick up nori in the winter sea



Making a thin sheets before dawn



Dried in the sun lights

# History

---



- Finished in 1962

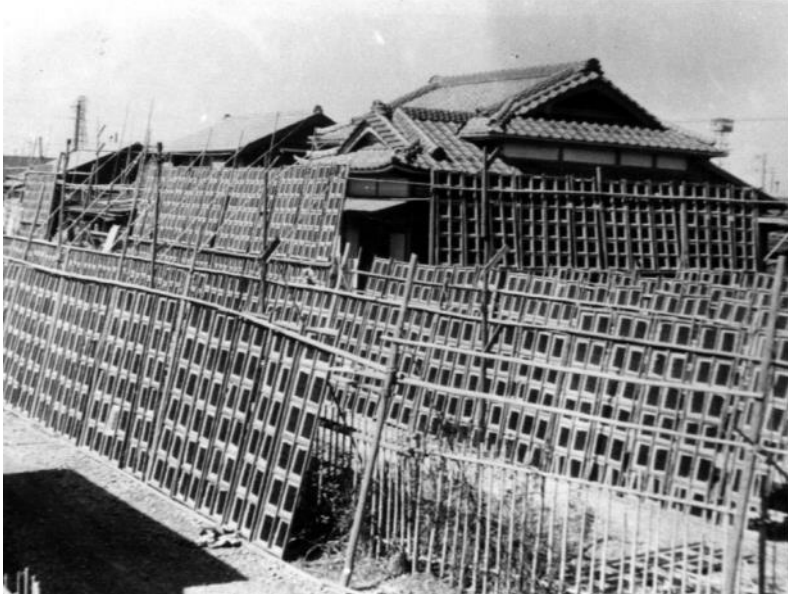
- Main reasons

1. Pollution 汚染

2. Reclamation 埋立

- Social background  
Economic growth,  
Tokyo Olympics (1964)

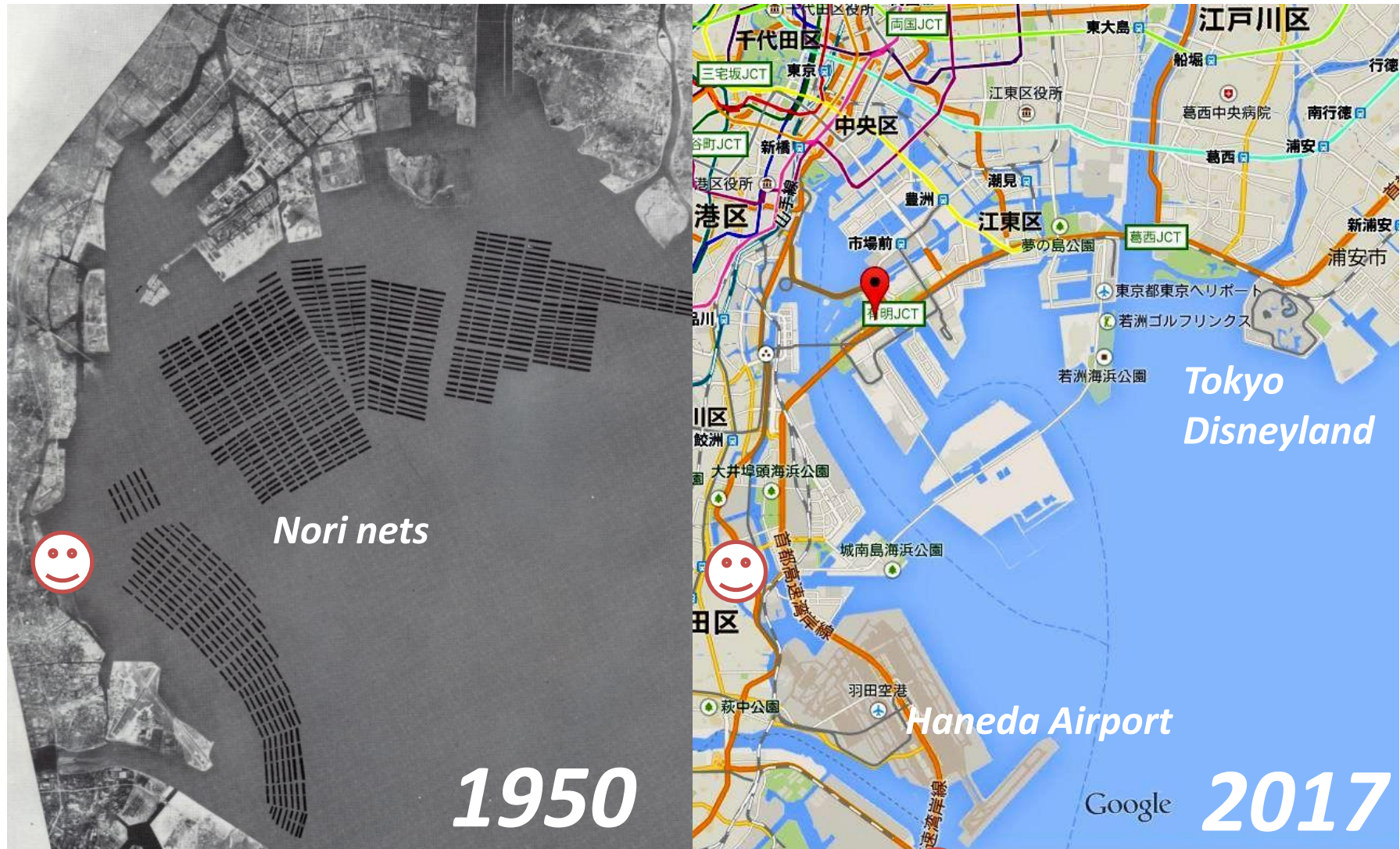
- 1,000 families were  
engaged in Omori





# Transition (1950→2017)

①

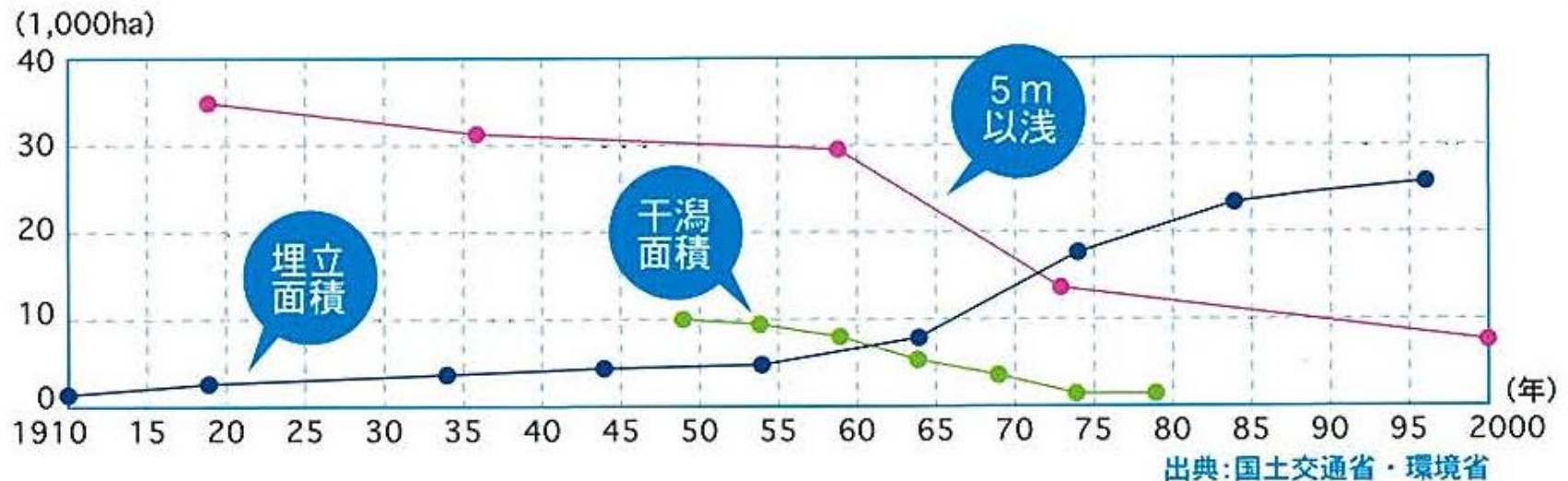


 **Omori Nori Museum**

# Transition (1950→2017)

②

- Reclaimed 20% area in the bay
- Wetland's area decreased to 12.5%





# Omori Nori Museum

---



- Near the Haneda airport
- Next to the regenerated beach
- Established in 2008
- History and technology of nori farming
- 100,000 visitors in 1 year



# Exhibitions

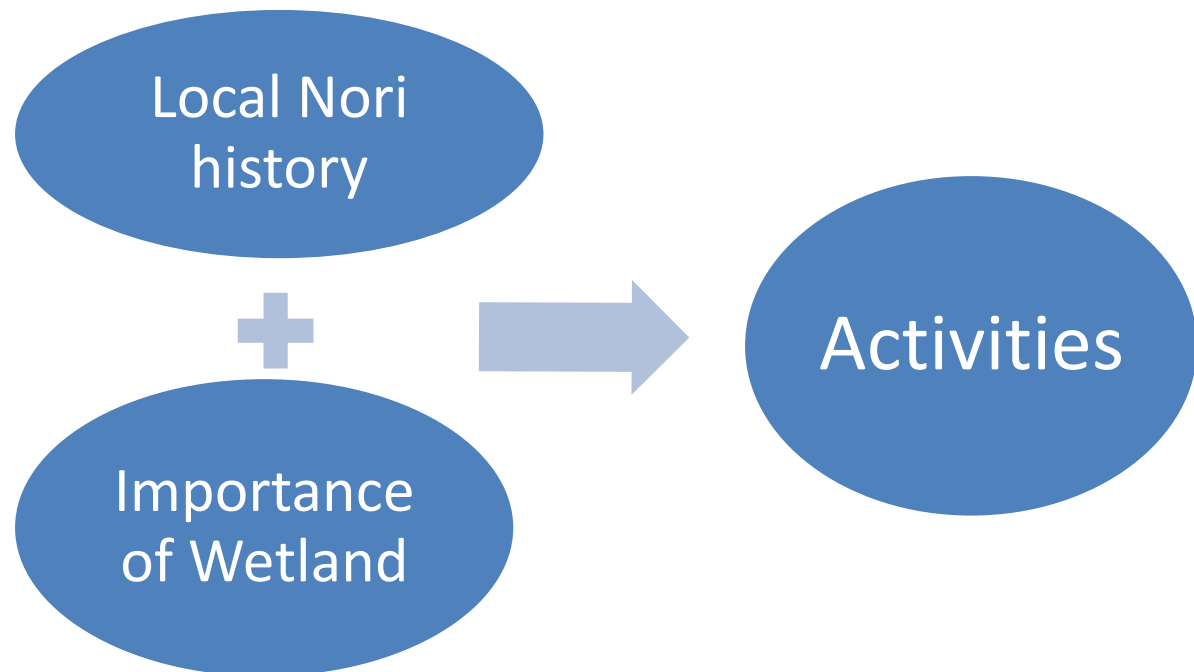


# Two main themes

---

1. Local Nori history 地域の海苔の歴史

2. Importance of wetland 浅い海の重要性



# Activities

---

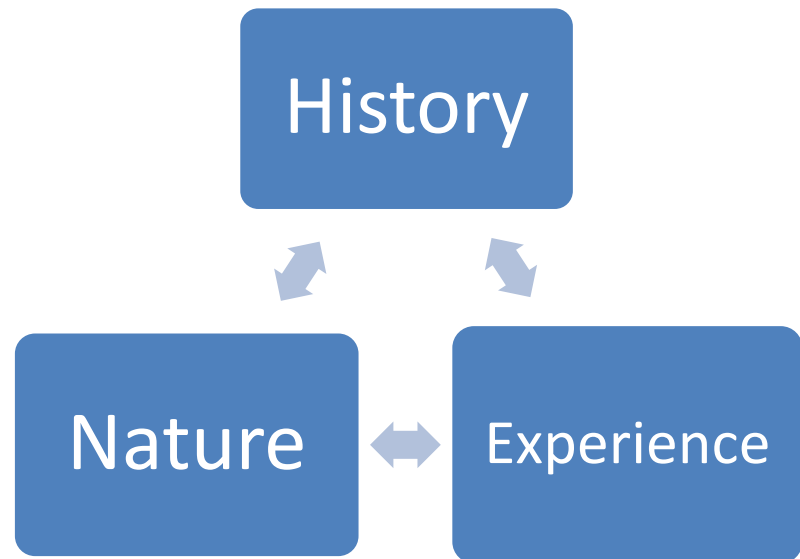
Activities consist of three elements

1. History 歷史

2. Nature 自然

3. Experience 體驗

↔ Related each other



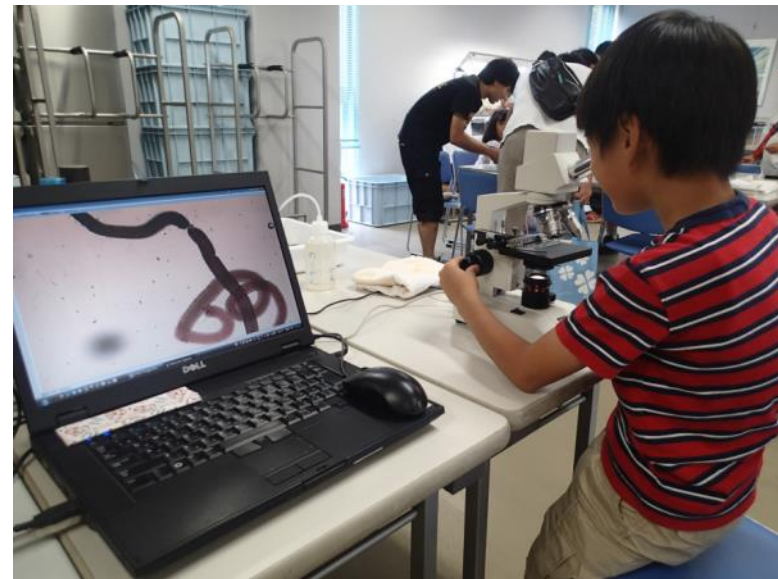


# 1. History – worksheets, townwalking, lectures





## 2.Nature – nature observations



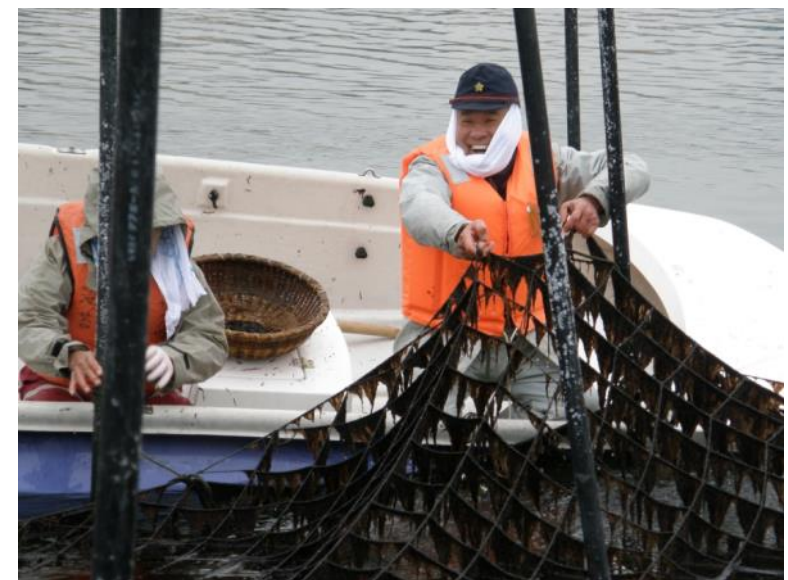


# 3.Experience – making nori sheets etc ①





# 3.Experience – cultivating nori actually ②



# Our goal

---

Main themes      Local Nori History  
Importance of wetland



Activities      History ▪ Nature ▪ Experience



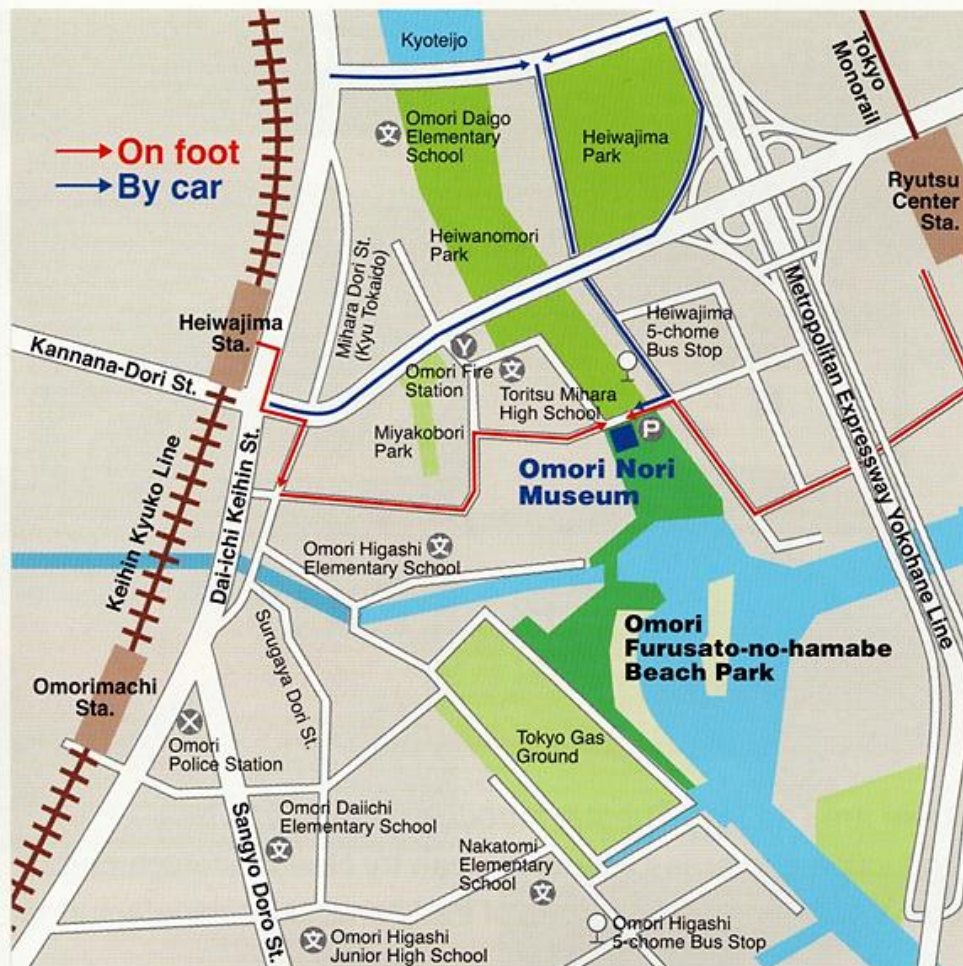
Goal

Give the later generation opportunities  
to think about the relationship  
between human and wetland

⇒ Wise use of Wetland



# Information



## Usage Guide

- ◆ Admission: Free
- ◆ Opening hours: 9:00 ~ 17:00 (From June to August, 9:00 ~ 19:00)
- ◆ Closed: 3rd Monday (In case the 3rd Monday is a public holiday, the Museum will be closed on the next day) and New Year's holiday (December 29<sup>th</sup> ~ January 3<sup>rd</sup>)

## Access

- ◆ 15-minutes walk from Heiwajima sta. on Keihin Kyuko Line
- ◆ 3-minutes walk from Heiwajima-5-chome stop on Heiwajima-Junkan bus departing from Omori sta. on JR Keihin Tohoku Line
- ◆ 15-minutes walk from Ryutsu Center sta. on Tokyo Monorail
- ◆ Parking Cost: 100 yen per 30 minutes

◆ web : <http://norinoyakata.web.fc2.com/>

◆ e-mail : [norimuseum@nifty.com](mailto:norimuseum@nifty.com)

◆ facebook :

<https://facebook.com/norinoyakata/>



Thank you for your kind attention.

---

Omori Nori Museum